



2012 ENTRY FORM WAIPU MUSEUM

'ART N TARTAN' - WEARABLE ART AWARDS
FRIDAY 13 & SAT 14 JULY 2012

Failte a Chairdean! Greetings friends!

We invite you help create the 2012 Waipu Museum 'Art n Tartan' Wearable Art Awards to be held on Friday 13 (evening show) and Sat. 14 July (matinee and evening show) at the Waipu Coronation Hall.

The Awards are a part of the annual celebration that commemorates the 1782 repeal of the notorious Act of Proscription that for 40 years after the Battle of Culloden, prevented Highland men and boys from the wearing of tartan. Our wearable art event celebrates Tartan as a symbol of self expression the bright thread in the greater plaid.

The entries for our previous shows ensured a breathtaking experience for the audience. The 2012 awards will follow a similar format to those of 2011.

The show itself will take the form of a dramatised presentation of all entries which will weave music, light and artwork into a magical and mythical extravaganza. This will be followed by a more traditional catwalk showing, accompanied by a commentary that describes the individual artwork, its story and the name of its creator. This way, your work will be guaranteed a viewing time that appropriately honours your effort.

Popular demand has convinced us to leave the categories very similar to 2011, with a new addition in response to demand - so "let your fancy take flight!"

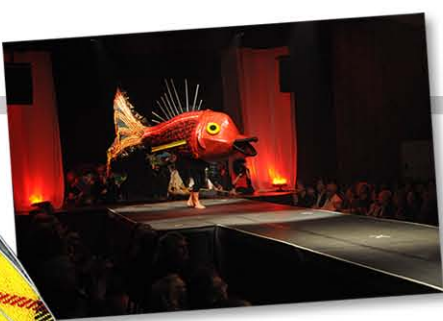


*Weld, weave, stitch and knit
Rivet, polish, trim, and fit
Loom a wonder for Tartan's sake
Let your fancy take flight,
and magic make!*

Should you have any queries...

please feel free to contact
Tracy Chapman 09 432 0896 or
artntartan@gmail.com

2012 ENTRY FORM



WAIPU MUSEUM PRESENTS
ART N TARTAN
WEARABLE ART
AWARDS

2012

let your fancy take flight



WAIPU MUSEUM

'ART N TARTAN' - WEARABLE ART AWARDS

FRIDAY 13 & SAT 14 JULY 2012

Categories...

Dressed To Kilt – this is our 'open' section. Choose your own theme or concept and create extravagant, completely 'over the top' tartan Wearable Art. Create artworks that transcend the every day ... indulge your senses with unrestrained excessiveness.... anything goes, so let your fancy take flight.

Warriors, Druids and Bards – The Celts were tribal warriors who inhabited large areas of Europe but ended up associated with the lands of Ireland, Scotland, Wales and Brittany. They were poetic, religious and superstitious, with a deep connection to the earth and its mysteries – explore (try Google) the people of the ancient 'Standing Stones', the Bardic sagas such as Beowulf, and inter-tribal rivalry and conquest.

McKiwi -

Explore the synergy between Celtic and Pacific Cultures.

Fireside stories from the Land of Myths –

Explore the Celtic Stories of the 'otherworld', the rich resource of Celtic mythology and Scottish faerie tales, with its supernatural creatures - ghosties, kelpies, giants, spirits.

Mask – create a "mask"terpiece inspired by all things Celtic - to proportions only limited by your model's body size.
Year 1 -Year 8 Students only.

Brave -Heart – Don't think of Mel Gibson!

The true Brave Heart is the person who brings courage to the challenges of day to day living. A Brave Heart transforms the mundane into the extraordinary.

Glamour in the 'Gloamin' * – Haute Couture goes tartan. Derived from ancient Scottish, the word Glamour once meant 'being held under a magical spell or charm'. Glamour is now more popularly associated with bewitching or illusory beauty. This category is where we let go of the more specific requirements of 'wearable art', and cater for the dressmakers and dreamers among us. 'Stitch, bewitch, and beguile'. * Remember, this category is not eligible for the Supreme Wearable Art Award. Entries in this dressmaking category are eligible for the Category Award only.

Important Dates

Friday 18 May – Entries close.

We must have received your entry form and payment by this date. One entry per design.

Friday 1 June – Due date for...

Artwork Description - see page 6

Saturday 16 June – Prelim-Judging Day

Restricted contestant ticket sales open

(See Contestant Information)

Sun 17 June - Waipu Local Ticket sales open at Museum

Monday 18 June - General Public & Internet ticket sales open (Through eventfinder) and Museum.

Sat/Sun 30 June or Sat/Sun 7 July

some models may be required for half day rehearsals - you will be advised.

Thursday 12 July – 6pm – Full costume and Tech.

Rehearsal (Not open to public)

Friday 13 July

Show 'Run Through' - 4.30pm

Opening Night Show 8.00pm, Show Doors Open 7.50pm

Meet & greet doors open 7.00pm

Saturday 14 July -

Matinee Show, 2.00pm

Awards Show - 8.00pm, Show Doors Open 7.50pm

Meet & greet doors open 7.00pm



WAIPU MUSEUM PRESENTS
ART N TARTAN
 WEARABLE ART
 AWARDS
2012

Let your fancy take flight

2012 ENTRY FORM

WAIPU MUSEUM

'ART N TARTAN' - WEARABLE ART AWARDS
 FRIDAY 13 & SAT 14 JULY 2012

CONDITIONS OF ENTRY

The Art n Tartan Wearable Art show is not a fashion show, it is a multi-media performance where the human body becomes a living, moving, breathing canvas.

We are not looking for a pretty dress (with the exception of 'Glamour in the Gloamin'). We are asking you to go deep into your imagination to create a piece of art that challenges what most consider to be wearable.

- Each entry must contain 33% (one third) overall of Tartan. Remember! This is non-negotiable, and will be one of the judging criteria.
- Tartan is defined as the following: Tartan is a pattern consisting of criss-crossed horizontal bands in multiple colours which is repeated in all directions, resulting in a distinctive pattern of squares and lines known as a "sett". Simple check patterns are not tartan. (Google 'tartan' if you are unsure).
- All entries must be wearable.
- Designers must find their own model. Art n Tartan may be able to assist with this if you live some distance away to make that impractical.
- We suggest you consider your choice of model, based on the following criteria - your model adds to your total effect: models for the show ideally should have a vibrant stage personality, relate comfortably to the audience, and be able to move well to music.
- The model in costume must be able to climb five steps rising 200mm and 1.8 metres wide.
- The model and artwork must be able to move freely to music on the catwalk.
- All wearable art entries must be able to be worn continuously for at least an hour without having to sit or remove the artwork.
- The same model will need to be able to attend the preliminary judging day, all rehearsals and the three shows.
- Each artwork must include the TOTAL concept e.g. any accessories to complete the look.
- Dressing Room entry is limited to two per artwork, the model and one designer.
- We reserve the right to refuse an entry if it is offensive in nature or if it fails to fit the required criteria.
- We reserve the right to transfer entries between categories, if deemed unsuitable for the category originally entered.
- Your entry fee is non-refundable (except in the case of lack of suitability of an entry, or the necessity to limit entry numbers due to limitations of the venue.)
- We reserve the right to edit your information for the programme and commentary - Changes will be discussed with you.



Judging Criteria

The judges will be considering such points as originality, in both ideas and choice + use of materials.



Entries will be judged based on the following criteria:-

- All entries must be wearable (but not necessarily practical)
- Creativity and originality (not streetwear)
- Design and the use of multiple elements and techniques
- Quality of workmanship and construction
- Overall presentation and impact on stage and ability to move with ease
- Conceptual meaning and impact, connection between garment title and finished product.
- 33% Tartan
- Appropriate for category chosen



2012 ENTRY FORM

WAIPU MUSEUM
'ART N TARTAN' - WEARABLE ART AWARDS
FRIDAY 13 & SAT 14 JULY 2012

Contestant Information

Saturday 16 June 2012 : Preliminary – Judging Day At the Waipu Coronation Hall.

Bring the following with you ...

- Completed wearable artwork
- Model to arrive with hair and make-up already done please.
- Refreshments
- The dressing room will be open for this day.
- Entry is limited to 2 people (dresser/designer and model).
- Please take your garment home after this preliminary judging day.
- Your model must be dressed and accessorised as if for show-time.
- Formal photographs will be taken and there will be a videographer onsite.
- This is when your completed artwork is presented to the judges.
- The judges will need your 50 word story and your list of materials. They will examine your design closely on your model, but in the interest of fairness they are not permitted to ask questions of the models.
- Please explain to your model how you want them to show off your creation – e.g. what is the feeling they should convey to the audience and judges.
- The director will be using this day for a first rehearsal.
- Time requirements will depend on entry numbers – we will endeavour to keep this reasonable. We will let you know closer to the date.



Thursday 12 July 2012 - 6.00pm – Full costume and technical rehearsal At the Waipu Coronation Hall – From 6pm
(Open only to the designers - sorry, no public attendance)

Bring the following with you ...

- Completed artwork
- Model in full makeup for costume rehearsal.
- Please leave your costume behind in the dressing room.
- Please arrive promptly to ensure we all get home at a reasonable time.

Friday 13 July 2012 – 4-30pm Briefing for dressing time requirements

5.00pm 'Run Through' as per the show

8.00pm **Opening Night Show** (You will not be able to leave between Run Through and Show)

Saturday 14 July 2012 – Matinee Show 2.00 pm.

- Dressing Room open 12 noon
- Your model must arrive by 1.00pm to the dressing room using the St Mary's Road access.
- Please remember to bring water and a snack.

Saturday 14 July 2012 – Awards Show 8.00pm.

- Your model must arrive by 7.00pm to the dressing room using the same access.
- The winners will be announced on Awards Night.
- After the Awards show please take your artwork home unless the Waipu Museum has asked that they keep it for further promotions.
- Alternative arrangements can be made with the Dressing Room Manager regarding larger pieces.

Show Tickets

- The Waipu Coronation Hall is a fantastic local venue but has size limitations.
- If you would like to view the show you must purchase a ticket.
- You will be able to pre-purchase two tickets per entry on Preliminary Judging Day.
- (Note this is two per entry, not per designer and model)
- This special concession only available on preliminary Judging Day.

Any queries phone or email Tracy Chapman.

2012 ENTRY FORM AND AGREEMENT

Remember to keep a copy of this!

Entry Registration

Name (as you would like it to appear in the programme)

Postal Address -----

Phone Home ----- Mobile -----

Email -----

School or Tertiary Institute (if applicable)

Category Entered -----

Title of Entry -----

Entry Fees

Yr1 – Yr6 Students \$10.00 Year 7 to 13 Students \$15.00 General \$25.00

Please make cheques payable to “Waipu Museum”

For payments by visa please phone Tracey Chapman Ph: 4320896

Any queries please feel free to contact Tracey Chapman
Ph: 4320896 or email artntartan@gmail.com

Entry Fee enclosed – tick applicable box

Yr1 – Yr6 \$10.00 Yr 7 –Yr13 \$15.00 Adults \$25.00

Form of payment Cash Cheque Visa

Friday 20 May 2011 – Entries close.

Register your entry by returning your completed entry form and payment.

I have read the terms and conditions of Waipu Wearable Arts and by signing this declaration I will abide by the conditions of entry.

Signed: ----- Date: ----/----/

Email to – artntartan@gmail.com

Post to - Waipu Museum, 36 The Centre, WAIPU 0510

**WAIPU MUSEUM 'ART N TARTAN' WEARABLE ARTS AWARDS
FRIDAY 13 & SAT 14 JULY 2012 - WAIPU CORONATION HALL**

Friday 1 June 2012 – Due date for the following :- (Post or email)

Entry Information **(Remember to keep a copy of this)**

Name (as you would like it to appear in the programme)

Postal Address -----

Phone Home ----- Mobile ----- Email

School or Tertiary Institute (if applicable)

Category Entered -----

Title of Entry -----

- A) In 50 words describe the story or message you are trying to convey.
- B) List the materials you are using in this creation.
- C) Give the approximate size or dimensions.
(Note: Double doors are 1.5 metres wide, and 1.9 metres high.
- D) What information would you like the director of the show to know about your artwork?

Email to – artntartan@gmail.com

Post to - Waipu Museum, 36 The Centre, WAIPU 0510 Pg6 (2 of 2)